



Upcoming Team Games

Two team games are on the schedule for March at the Bridge Center. The inaugural nighttime **Swiss Teams** gets underway on March 2 at 6:30 p.m. Swiss seems to be everybody's favorite game; we'll see you there!

The Unit's annual Membership Meeting, described on p. 6, will be held just before the next Unit game, which is set for March 29, the last Sunday of the month, at 12:45 p.m. The format for this game is Board-A-Match Teams, described below.

As usual, there will be two flights, an open and a 99er. For both of these team events, please sign up ahead on the list at your local club or call the Bridge Center to add your team to the list. The Unit really needs cooperation with registration because they are so popular. For further information contact Phyllis Gaffney, 2oma-opa-gaffney@comcast.net

Swiss on March 2nd;

Board-a-Match on March 29th

Board-A-Match is a special type of team game, with a strategy similar to that for matchpoints. The movement, like a Mitchell, is set up in such a way that that if the N/S pair of, say, Team A plays a board against the E/W Team B pair, Team A's E/W pair will play the same board against Team B's N/S pair. At the end of a session, team members gather to compare scores.

Although many teams play the same hands, *only the result you and your teammates got on the board matters*. If you and your teammates earned a net positive on the deal, you win the board (and earn one point). If you are net negative, your team earns no points; if you tie (net of 0), you earn half a point. Thus, the event is even more "matchpointy," since there are no above or below average boards--only top, average, or bottom. Many top-flight players claim Board-A-Match is the toughest bridge event, partly because the scoring system makes each overtrick, both on offense and defense, so important.

Board-A-Match in Plain Words

Feb. 8 Swiss and Jan. 18 Pairs Results and

Best 2008 Unit Performers



Top: Rich and Jody Williams; Bottom:
Phyllis Gaffney, Carolyn Chaney

Swiss Teams again proved to be everyone's favorite on February 8, as a record crowd of 41 tables (!!) came out to play. The eleven tables in the 99er flight, thanks to the efforts of Phyllis Gaffney's publicity, were a welcome surprise. In the 30-team open field, the foursome of Eric Mayefsky- Argenta Price-Alex Lovejoy-Angeliki Magklara topped both the A and B strata with 59 points. The winners in C were Diane Kelley - Annette Laird - Jeannette McNeil - Grant Spaeth. In the 99ers, the team of Denise Pitsch - Clara Chang - Elizabeth Root - William Epperly and the team Kathy Puryear - David Puryear - Lynn Giusti - Rick Giusti tied for first.

Before the game got underway, the winners of the Unit's 2008 race for best performances received their plaques. Phyllis congratulated Rich and Jody Williams (see left, top) in the open and Carolyn Chaney (shown with Phyllis Gaffney at left) in the Non-Life Masters.

On January 18, the players turned out for an 18-table pairs event, in which Irwin and Mona Waltz led the way in the 15 table open flight. In the 99ers, Scott Heise and Adi Zarchi placed first.

The Unit owes all these wonderful successful events to the many volunteers and especially to the directors, Clarie Coleman and Sue Johnston and the Unit game chairs, Eric Mayefsky and Phyllis Gaffney, who dealt with the huge crowd in February. Also we appreciate the help from Alan Templeton, Walt Gaffney, Duane Coleman and Wendy Dewell for setup and cleanup.

Bridge Center Finances

Most people don't realize the magnitude of the finances required to run our Bridge Center. Last year Bridge Center expenses were almost \$115,000. The largest part of this expense was the rent we pay Twisters Gym, almost \$78,000, followed by maintenance (almost \$12,000), supplies (over \$11,000), furnishings, utilities, insurance, etc.

As with everything else, Bridge Center expenses rise each year. Fortunately, attendance at our games is rising, which generates the revenue required to pay rising costs without raising our rates. Credit for this increase goes to the club owners who provide competitive, yet pleasant games; to our education program headed by Lori Spaeth; and to the clubs that hold intermediate/newcomer games, including Walter Miller's game held at Unity Church, which bring new players into all of our games.

Unit game policies: Remember that Sunday Unit games have a 12:45 p.m. arrival time. If the table count exceeds 35, a late arrival or a failure to sign up may ban you from playing. Tardiness at any Unit game may also be grounds for matchpoint penalties at the discretion of the director. The Unit would support a similar action at club games. At Unit games, there will not be any travelers, paper or electronic.

2009 Mentor/Mentee: Chair Jeannette McNeil has posted a new listing of the current Mentor/ Mentee Pairs on the bulletin board at the Bridge Center. Please take a moment to make sure she has listed your information correctly. If not, please contact her at jmcset@aol.com. If you would like to become either a mentor or a mentee please see the separate sign-up sheet that Jeannette has also posted at the Bridge Center. She will check the signup sheet on a weekly basis and contact you accordingly. Contact her by either email or phone at 650 854-2249. We are all looking forward to bringing in some new duplicate players this year.

Election chair: Ginger Herrick has generously accepted this appointment from President Mike Atherton.

Kudos to Duane: A lot of people donate their time to our Unit and our Bridge Center. Special recognition for holding down expenses goes to Duane Coleman who spends countless hours keeping our facility running. Thank you, Duane.

Firecracker facts: Last year's Firecracker was the second largest sectional in the country, the largest being the Atlanta sectional with 1084 total tables compared to our 917. However, we had the largest total attendance of 1038 players to their 852. An interesting coincidence was that their tournament, the July 4th SuperSectional, was held on exactly the same dates as ours last year and will again be on the same dates in 2009.

Unit 503 Educational Committee reminders: The Committee would like to remind Unit members about the Unit's ongoing commitment to bridge education within our Unit as well as in the area. In addition to existing initiatives such as the Unit library and lecture series, new initiatives are already underway to help introduce bridge at the middle schools.

Unit News



Newcomer Games
Tuesday evening (Begin./Intermed.)
Wednesday afternoon (<50)
Wednesday evening (<50)
Friday morning (<30)

NEWCOMERS

A warm welcome to new Palo Alto Unit
 503 members: Steven Bird, Albert Gouyet, Jean-Marc Sellier, Fung Bao, Jacqueline Boberg, Richard Boberg, Joanne Jacobs, Stephen Jacobs, Annette Nielsen and Dale Storm.



**All About
Will Watson
By Mary Van
Tamelen**

NEXT BOARD MEETING:
Tuesday, March 3 at 3:45 p.m.
Bridge Center

Palo Alto Unit 503 Board

Michael Atherton,, President
Dave Wheeler, Vice-President
Susana Krulevitch, Secretary
Alan Templeton, Treasurer

Trina Bowman, Phyllis Gaffney,
Nita Girand, Steve Lubeck, Eric
Mayefsky, Jeannette McNeil, Grant Spaeth

Tuesday afternoon bridge games have a director who dashes around madly, quickly arranges tables and players, sometimes with phantom pairs or oddly-numbered boards, answers questions, serves lunch, caddies, deals with director calls, late players, computer entries, team games, and presents pre-dealt hands with hand records—and everything always comes out perfectly! Will Watson juggles all aspects of directing with good humor and aplomb. He's "one in a million," according to a former Unit president.

Will grew up in a small town in northern Connecticut, where, unsurprisingly, he was very successful in math competitions. He also placed in the top 50 in the Putnam Exam, a college math competition, two times. He had an early exposure to bridge; from the age of nine, he participated in evening family bridge games. By the time he went to Cal Tech to study physics, he was playing a great deal. It was there he took his director's exam. He left Cal Tech without finishing and returned to Connecticut.

After a few years bridge player Andrea James invited him to the West Coast; here he found work as a computer systems administrator in a start-up company. When that business failed, he began directing full time for Cameron Cotton in Palo Alto, San Jose and San Francisco. He lives in Sunnyvale at the home of Ed and Barbara Barlow.

Will's ambition is to be a better bridge player, to play more bridge and participate in national tournaments, especially in Grand National Teams. This year his team won the district open. However, he finds it tough to arrange for time off from directing.

He says that bidding agreements between partners must be accurate. He's a "systems agnostic," interested in trying out different methods. In club games, he feels it's not as important to win as to play as well as one can. He does do a lot of reading about bridge, especially very old books of how to bid; he recalls an amusing 1929 text on a "one over one" bidding system. His non-bridge reading includes science fiction, fantasies and mysteries.

The only aspect about directing Will doesn't like is contention—when players have conflicting versions of what happened, or when a player will correct his partner's explanation. And he wishes dummies would learn to be real automatons; their gestures can cause real problems.

This director, Will Watson, who can juggle all aspects of bridge direction with ease, has only one non-bridge hobby I could discover—and that's juggling.

REMEMBERING ANN MOLLARD
By Dee Hornback

I met Ann Mollard thirty years ago when I moved into her neighborhood. I was instantly invited into the neighborhood bridge club – where nobody had ever played duplicate bridge. About twelve years ago I drug her off to the Monterey Regional.

She had still never played duplicate before, and I hadn't had much more experience. But, at that time we had a beach house not far away, so it was, "Why not?" She was pretty much overwhelmed by the crowds – but neither one of us knew who were the great players we were playing against, so we were too dumb to be intimidated. We also had no idea of bridge etiquette or protocol.

From that day on, though, she was hooked on duplicate bridge and virtually never played social bridge again. We got every one of our 25 gold points together playing senior pairs.

Ann went on to make many friends at the Bridge Center. I called her a friend machine because she made so many. I never saw her without a smile on her face. About a year after she took up duplicate, she said, "Aren't duplicate bridge players nice? I've never met so many wonderful people." Actually, that's how people saw her, too.

Player Advancements

The ACBL February report shows that the players named below have moved up. Congratulations!

Junior Master	5 MP	Ann Suyeyasu
Club Master	20 MP	Cyrus Coupal, Eleanor Mac-coby, Mary Fossourier
Sectional Master	50 MP	Sally Ahnger, Jane Waggoner Raphael Pappo, Shirley Streifer
Regional Master	100 MP	Janice McCullough
NABC Master	200 MP	Neal Strand
Life Master	300 MP	Michael Atherton, Lee Haze
Bronze Life Master	500 MP	Donna Armstrong, Sioux Atkin-son, Judi Carollo
Silver Life Master	1000 MP	Franklin Gonzalez

SYMPATHY
The Unit Board and members extend their sincere condolences to the friends and family of long-time active Unit member Ann Mollard.

ACBL DIRECTORS COURSE
Hosted by Palo Alto Unit 503

Where: Palo Alto Bridge Center, 2639A Terminal Blvd., Mt. View, CA.

When: Four Consecutive Mondays (April 13, April 20, April 27 and May 4) from 6 p.m. to 10 p.m.

Instructor: Nancy Boyd

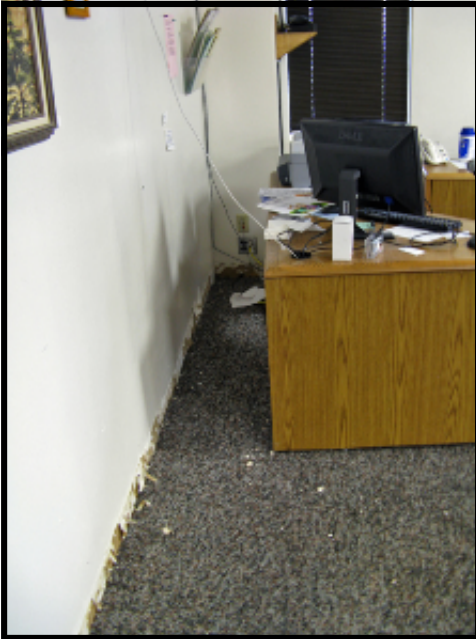
Cost: \$120 per person (includes the cost of the exam whether taken or not)

Registration: Call or email Jeannette McNeil (650) 854-2249 jmcsunset@aol.com no later than March 15.

Cancellation: The course will be cancelled if there is insufficient interest. Full refund for registrants.

Your Bridge Center

As of Saturday, February 14th.



These photos, taken by Roy Robinson on Saturday morning after the standing water had been removed, give a graphic description of what can happen in a very brief time.

Here are Roy's descriptions of each photo:

Top left: shows damage along the base board (sorry, a little blurry) and gives an idea of the depth of the water.

Middle row, left: The water on the window isn't rain. It's condensation on the inside of the glass. Even with numerous fans blowing, it was really humid in there.

Middle row, right: shows more closely the area where the water came through the ceiling. A lot of sheet rock has been removed.



Bottom: Panoramic over-view. The water pipe that broke was in the ceiling somewhere near the kitchen corner. Sheet rock has been removed.



The Big Flood

By Alan Templeton

Composed Saturday, February 14, 2009

Friday morning the owner of Twister's Gym emailed me (he couldn't find any phone numbers for the Unit) to inform me there had been flooding at the Bridge Center. I assumed this was probably another case of wet ceiling tiles and carpet from a roof leak. I drove to the Bridge Club and immediately noticed all the trucks around our facility. This wasn't shaping up as a simple leak after all.

There were half a dozen men working inside our facility and at Twister's Gym. All the furniture was off to one side or up on foam pads to get them off the rug. The wall around the men's room was exposed where they had removed all the dry wall. Fans and dehumidifiers were on full blast. I was relieved to see that the artwork on loan did not appear to be damaged.

I found Allan Fusilero, owner of Twister's Gym, who told me that late Thursday evening an employee in the rock Climbing area noticed water on the floor. He called his supervisor and they searched for the source and eventually opened an access door above our facility and found pipe gushing water. They shut off the building water supply and called Allan. Allan assessed the problem and contacted a disaster recovery company which got there around 1 AM.

When the recovery company looked into our area through the back doors they noticed ceiling tiles on the floor and that the rug was "glistening". They then pumped almost 900 gallons of water out of our building and started fans and dehumidifiers to dry out our facility. They also removed damaged ceiling tiles and dry wall. They determined that the

leaking pipe had been damaged at some time in the past and had failed.

Friday afternoon I put a notice on our website and emailed the board of directors and club owners letting them know about the problem and asking them to spread the word.

Saturday morning Elinor Tanck contacted the artist whose paintings were on our walls. The artwork was removed that morning with help from Roy Robinson.

The plans for repair include spraying a disinfectant to prevent mold as well as reconstructing the damaged walls. If the rugs do not have to be replaced they will have to be thoroughly cleaned. If they do need replacing there will be the additional time to do that.

The Board believes that most of the cost of repair will be covered by insurance. We'll be working with the building owner, with Twister's Gym (from whom we sublease), and with our own insurance company.

At this point we're following progress. Although we'd like to resume operation as quickly as possible, our number one concern is that our facility be safe for our players before we reopen. The website, www.paloaltobridge.com, will keep you informed.

Editor's Note: Alan composed this report within 48 hours of when the water was discovered. Some of the details herein may change with time, but we wanted these pages to be as timely as possible. Check the website for more current information.

Membership Meeting Set for March 29

The by-laws require the Unit to have an annual Membership Meeting. The 2009 meeting will be at the Bridge Center on Sunday, March 29 at 12:45 p.m., prior to the Unit game. This meeting gives Unit members the option for direct participation in the Unit's decision and policy making. Any member who wishes to place an item on the agenda must notify the Unit secretary, Susana Krulevitch, in advance by email susana440@sbcglobal.net or by phone at (650) 948-8882. A written note should follow any telephone communication.

Those Terrific Lec- tures Keep Happening!

The Thursday Morning Lecture Series is rolling along with great success. A record 90 bridge players heard Eric Mafesky discuss two-suited hands on January 29 and 75 more on February 5 for Sue Johnston's Defensive Signals. Feedback on the nine previous lectures has all been positive.

On March 12 and 26, you'll learn all about opening bids, first in suits and then in notrump. The Unit web site (under Education in the left column) is a fine source for information about upcoming lectures. Send your suggestions to Alan Cummings at alan.cummings@stanford.edu. Mark your calendar for upcoming dates and join your friends as we all learn this great game of bridge. This lecture series is made possible thanks to tax deductible donations by our Unit members to the ACBL Educational Foundation for our Unit's use.

Library Needs Volunteers

Thanks to the generous donations of our members, the Unit's library is stocked full of books ready for borrowing. Listings of the books appear on the 503 Website under "Library." Our goal is to have the library open half-hour before and after each game. We need volunteers to help distribute the books and receive returns. Mondays are covered and most Tuesdays. We need volunteers for Wednesday, Thursday, Friday, Saturday and Sunday, as well as the evening games on Tuesday, Thursday and Friday nights. If you have an interest, please contact: Donna Armstrong percycat@gmail.com or Alan Cummings alan.cummings@stanford.edu. The Unit appreciates your help.

Keep Those Bridge Education Ideas Coming!

The Unit is always interested in supporting ideas for educational programs from Unit members who are interested in helping bring these ideas to life. Under some circumstances, these projects may receive financial support from the Unit Educational Fund. If you are interested in creating an educational bridge program, or you have general interest in helping with Unit educational initiatives, please contact Unit education co-chair Eric Mayefsky at mayefsky@stanford.edu.

Kibitzer

ACE OF CLUBS			MINI-MCKENNEY	
		MP		
Cyrus Coupal	21	0-5	Cyrus Coupal	26
Susan Barkley	17		Susan Barkley	23
Marjorie Gray	11		Zizhuo Wang	19
		5-20		
Merry Stephenson	31		Merry Stephenson	36
Janet Cross	18		Janet Cross	24
Sheryl Johnson	16		Sheryl Johnson	21
		20-50		
Carolyn Chaney	36		Daniel Harting	65
Susan Griswold	26		Carolyn Chaney	64
Mary Radin	25		Susan Griswold	52
		50-100		
David Crosley	42		Han-Yu Chang	76
Vera Howard	41		Valerie Baldwin	73
Annette Bialson	37		Jonathan Ullman	69
		100-200		
Lynne Louise Johnson	64		Josephine Ventura	111
Carolyn Lemm	53		Gary Fong	109
George Paris	50		Gladys Fong	109
		200-300		
Joan Bower	62		Belinda Gu	180
Lee David Haze	54		Phyllis Gaffney	157
Phoebe Korn	50		Carol Clements	100
		300-500		
Christian Lazarovici	91		Christian Lazarovi	137
Stephen Lubeck	56		Henryk Szejnwald	121
Frey Charney	49		Nancy Rude	119
		500-1K		
David Wheeler	134		Geeske Joel	224
D Bernstein	118		David Wheeler	223
Marjorie Sterngold	79		Nadia K Nilsson	222
		1-2.5K		
Martie Moore	155		Barbara Sonsini	523
Virginia K Herrick	143		Mike Develin	325
Lori Spaeth	131		Eric Mayefsky	246
		2.5-5K		
Patricia Chambers	137		Mary Ann Berg	364
Robin Chambers	119		Patricia Chambers	288
Trina Bowman	116		Robin Chambers	272
		5-7.5K		
Margery Yates	120		Hansa Narasimhar	685
Jim O'Neil	106		Jim O'Neil	432
Hansa Narasimhan	71		Gary Macgregor	381

UNIT LEADERS IN ACE OF CLUBS AND MINI -MCKENNEY

The ACBL gives the Ace of Clubs awards to the players who earn the most points in club games and the Mini-McKenney awards for total points including sectional and higher ranked tournaments. Congratulations to those who finished in the top three for 2008.

In the greater than 10K master points category, omitted to the left for lack of space, Gene Simpson earned 21 and 1127 MPs in the respective categories. G. Venkatesh earned 181 MPs in the Mini McKenney.

All games take place at 2639A Terminal Blvd., Mountain View 94043 unless otherwise noted.

DAY	BRIDGE CLUB	TYPE	TIME	DIRECTOR(S)	PLACE/OTHER INFO
MON	Bridge Mix	Open/<2K	11:00 a.m.	Kevin/Bonnie/ Claire/John	
TUES	Tuesday Noon BC	Open/Strat.	12:00 p.m.	Walter Miller	Unity Church, YES Rm, 3391 Middlefield Rd, PA
	Alpine BC	Open/<1K	12:00 p.m.	Will Watson	
	Just For Fun	Begin./Inter.	7:00 p.m.	Solna/Omer	No master points given. Call Solna at (408) 685-5323
WED.	Bridge 'n Brunch	Open/Strat.	11:00 a.m.	Sue Johnston	
	Wed Aft. 49er	<50 M.P.	1:00 p.m.	Walter Miller	Unity Church, YES Rm, 3391 Middlefield Rd, PA
	Lori & Sue's Dblton Club	Open/Strat.	7:00 p.m.	Spaeth/Johnston	
	Lori & Sue's Dblton Club	<50 M.P.	7:00 p.m.	Spaeth/Johnston	
	Lori & Sue's Dblton Club	<200 M.P.	7:00 p.m.	Spaeth/Johnston	
THUR	Thur. Afternoon BC	Open/Strat	12:00 p.m.	Beardsley/Mattis	
	Sherie's BC	Open/Strat.	12:30 p.m.	Sherie Greenberg	4000 Middlefield Road, Auditorium, Palo Alto
	Cardinal DBC at Stanford	Open/Strat	7:00 p.m.	Eric Mayefsky	Meyer Library, 560 Escondido Mall, Stanford
FRI	The EZ Game	<30 M.P.	9:00 a.m.	Roy Robinson	
	Friday Morning BC	Open/Strat.	10:30 a.m.	Claire Coleman	
	Friday Night Barometer	Open/Strat.	7:30 p.m.	Claire Coleman	
SAT	One Club	Open/Strat.	12:00 p.m.	John Prior	
SUN	Sunday Afternoon BC	Open/Strat.	1:00 p.m.	Coleman/Watson	

SPECIAL EVENTS

- * ACBL Senior Pairs, Monday, February 23, at 11 a.m. Bridge Mix
- * Upgraded club champ., Wednesday, February 25 at 7 p.m. Doubleton BC
- * Sectional, Saturday, February 28 at Community Ctr, El Cerrito
- * Charity game, Thursday, March 5 at 7 p.m. Cardinal DBC
- * Sectional, Saturday, March 7 at Expo Center, San Mateo
- * Membership Game, Wednesday, March 11 at 11 a.m., Bridge 'n Brunch
- * Unit lecture, Suit Opening Bids Revisited, Thursday, March 12 at 10 a.m. Bridge Center
- * Club Championship, Thursday, March 12 at noon, Thurs. afternoon B.C..
- * 299er Sectional, Saturday, March 14 at Masonic Temple, Santa Cruz
- * Charity game, Thursday, March 19 at 7 p.m. Cardinal DBC
- * Sectional, Friday, March 21 at Odd Fellows Hall, Santa Rosa
- * Unit lecture, Notrump Opening Bids Revisited. Thursday, March 26 at 10 a.m. Bridge Center
- * Sectional, Friday, March 27 at Centre Plaza, Modesto
- * Membership Meeting, Sunday, March 29 at 12:45 p.m. Bridge Center

Directors

Bonnie Beardsley (408) 263-5953
 Gabriella Bowling (650) 941-8398
 Claire Coleman (650) 368-5917
 Sherie Greenberg (650) 856-7941
 Sue Johnston (510) 505-0275
 John/Linda Mattis (408) 739-7812
 Eric Mayefsky mayefsky@stanford.edu
 Walter Miller (510) 839-5929
 Kevin O'Leary (650) 279-0005
 John Prior (408) 745-0380
 Roy Robinson (650) 941-7978
 Frank Smoot (408) 732-5736
 Lori Spaeth (650) 947-9370
 Will Watson (650) 804-1731

Unit Contact: Claire Coleman (650) 368-5917 or e-mail
unit503@paloaltobridge.com

Unit 503 Web Address:
<http://www.paloaltobridge.com>

Bridge Center Phone: (650) 940-1824
 District 21 Hotline: (888) 292-4612
 Dist. 21 Website: www.d21.acbl.com

Kibitzer Editorial Staff

Elinor Tanck (408) 738-2511
 e-mail: tancke@sbcglobal.net
 Marian Kelly (650) 854-1896