



Kibitzer

Palo Alto Unit 503

Volume XXXX, Issue 9

September 2002

Swiss Teams Match Up September 22

The ever popular Unit Swiss Teams is back again! The Unit has scheduled a one-session Swiss Teams for Sunday, September 22 at 1 p.m. at the Bridge Center. Because, this is a favorite game and for a prompt start at game time, please reserve in advance. **Also, it is of prime importance to arrive by 12:45 p.m. at the latest.** This game replaces the regular Sunday Afternoon pairs game.

The Unit will also use this event to qualify teams for the Inter Unit match with the Santa Clara Unit on Sunday, October 27. To be eligible for the strata qualification, the master point holding of

each team member must not exceed the strata maximum. The Inter-Unit strata are: Open (0-infinity), Flight A (0-2000), Flight B (0-750), Flight C (0-300), 99ers (0-100).

The Unit requests teams sign-up by Friday, September 20, with a list of the players on the team, to help in the set-up and seeding of the participating teams. Sign-up sheets will be available at the Bridge Center and club games at the Unity Church and Cubberley or contact Kevin O'Leary at 650/965-1827 or email oleary20@pacbell.net. Both 2001 Unit Swiss Team events attracted 19 tables, so we expect a big crowd.

Don't Gripe! Make It Right! Become a Candidate to the Board

Before we know it, the December election date for the Unit Board of Directors will be here.

Board members attend meetings, currently the first Tuesday afternoon of each month, and chair and serve one or more of the many committees. In addition to the meetings, it's only a few hours a month of time and you will be an integral part of the decision making process for the Unit. Put your opinions into action.

Please contact Ginger Herrick at 650/948-2994, if you wish to run for the Palo Alto Unit Board of Directors.

Sherie's Bridge Club on the Move



Sherie's BC, which meets on Thursday at 1 p.m. will move to Cubberley Community Center on September 5. The club will be closed on August 22 and August 29.

The address for Cubberley is 4000 Middlefield Rd, Palo Alto, between Charleston and San Antonio. The club site at Cubberley is Room M4, next to the main auditorium.

There will be a half-hour lesson by Gene Simpson on the day's hands 10 minutes after the game on Sept. 11, Sept. 18, Oct. 2, Oct. 23 for a cost of \$2. If there is not enough interest at the Sept. 11 session, the later sessions may be cancelled.

Board Meeting Highlights

- Alternate Firecracker site search for 2003 underway with appointment of Merle Orelove and Gloria Leitstein.
- Board approved a \$5000 payment to Duane Coleman, as a partial reimbursement for the money owed him for Bridge Center expenses.
- Richard Johnson reported on publicity opportunities for Easy Bridge program

Saturday, Sunday Night Live at the Center

The Bridge Center is available for rent to Unit members, by advance reservation. Suggestions include a private bridge party, birthday party, bridal or baby shower or whatever (no children, please). The cost is \$2.50 per guest. Call Claire Coleman at 650/368-5917 at least one week in advance to make reservations.

NEXT BOARD MEETING
Tuesday, September 3, 4 p.m.
Bridge Center

NAOP Unit Final List for Saturday, October 19

All players who qualified in the NAOP club games in August are eligible to play in the two-session Unit final, scheduled for Saturday October 19 at the Bridge Center.

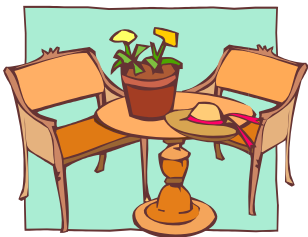
Watch for the list of qualifiers on the Center bulletin board. There will be additional details in the October Kibitzer.

Please Check First

We know you mean well, but bringing items to the Bridge Center is a NO!NO! unless you notify a club owner or Unit officer. Any articles brought into the Center could cause a problem with the Center's permit with the City of Mountain View.

The Board requests that whoever brought the microwave to please remove it. The city Fire Departments forbids the use of a microwave in the building.

Table Talk



cards and bridge books.

Capital Chatter

Lots of congratulations go to Paul Cornelius, a member of the Flight C

Good luck to Marta Cordell. She has taken off for San Diego with her tennis racket, balls,

District 21 winners in the Grand National Teams. Applause also to Peter Freidland, a member of the team which tied for third in the Championship Flight.

Louise (Lulu) Frye became a Life Master with a big win in the Nationals. She earned 25 points, when with Bill Sumner as her partner, her team scored a first in a Knock Out.

Thanks go to Hansa Narasimhan for buying us side tables for the Center. The Club just keeps getting better.

Did you know the Bridge Center's new digs were mentioned in a little article in the Palo Alto Daily News? Article is posted at Club for those of you who haven't seen it. We have Richard Johnson to thank for that.



Easy Bridge Ready for Action

Bridge is a snap with "Easy Bridge," sponsored by the ACBL. Easy Bridge is coming weekly on Monday evenings from 7:00-9:30 p.m. to the Bridge Center starting September 9. The first two weeks feature free lessons plus a free book with partners guaranteed.

Come for the bridge proven to exercise the brain and increase and maintain mental acuity and health. Enjoy the social side with fun, friendship, belonging, approval, entertainment and interesting people.

Find the challenge with pride in achievement, a chance to compete and new interests. Indulge in the free refreshments, special parties and social chat time.

Telephone contact, Claire Coleman reports she has been swamped with calls for Easy Bridge. Stop by the Bridge Center and pick up cards to give to all your friends. For further info, contact the coordinator, Faye Parsons at 408/378-4719.

Beginning Bridge Lessons

Introduce your friends to bridge by encouraging them to attend the Unit lessons, which start on Thursday, September 5 from 7 p.m. to 10 p.m. at the Bridge Center on Terminal Blvd.. Frank Smoot will be the teacher. The lesson plan will be the ACBL Club Series for Novice Players. The cost for the eight lessons is \$70, which includes the text book. Unlike Easy Bridge, this is a more traditional (but still fun!) way to tackle this wonderful game of ours.

For further information call Lori Spaeth at 650/947-9370 or Joan Von Gehr at 650/366-2554.

Newcomers

A warm welcome to new Palo Alto Unit 503 members: Helen Tseng, Allan Wolman, Nancy Anderson, Polly Burn and Rosalind Dolph. Hello, to Mark Jung, Diane Kelley Marjorie Sterngold, Stormy Sterngold, Yi Chen, Bin Dai, Barbara Ober, John Green, Floyd McWilliams, Joan Shaffer, Frank Smoot and Edgar Simons, who recently transferred into the Unit.

Player Advancements

The ACBL May 31 printout shows that the following players have moved up. Congratulations!

<u>Junior Master</u> (5 Master Points)	Anne Battle, Margaret Soltz, Ursula Summey, Jack Birnbaum
<u>Club Master</u> 20 MP)	Freya Charney, Genevieve Gusman John Gusman, John Mattis, Tom Stevens, Boyer Chu, James Newell, Marilyn Newell
<u>Sectional Master</u> (50 MP)	Eriko Lissner, Robert McNeil, Irving Krulevitch, Susana Krulevitch
Regional Master (100 MP)	Jean Franke, Linda Mattis, Jane Janetos, Marjorie Marx
NABC Master (200 MP)	Carl Brunsting, Alan Cummings
<u>Life Master</u> (300 MP)	Greg Humphreys, Doreen Hornback
<u>Bronze LM</u> (500 MP)	Narayan Mohanran, Ethel Worcester
<u>Silver LM</u> (1000 MP)	Mary Coffman, Pat Krupa
<u>Diamond LM</u> (5000 MP)	Peter Friedland

NOVICE – INTERMEDIATE DUPLICATE the **fun** games - tell your friends

0 - 50 MP (with lesson) Wed. 1:30 pm
< 200 MP Tues 12:00 pm
Unity Church, 3391 Middlefield Rd., Palo Alto
for info call Walter Miller at 510-839-5929

Palo Alto Unit Leaders in Ace of Clubs and Mini-McKenney Races

The ACBL gives the Ace of Clubs awards to the players who earn the most points in club games and the Mini-McKenney awards for total points won including sectional and higher ranked tournaments. Congratulations to the Palo Alto players who are in the lead at the midpoint in 2002.

Ace of Clubs

ROOKIE	John Mattis	10.41
	Jack Birnbaum	6.42
	Marcie Pais	5.95
JUNIOR MASTER	Donna Armstrong	11.72
	Genevieve Gusman	10.88
	Freya Charney	8.82
CLUB MASTER	Jean Brandon	12.77
	Adeline Soares	10.05
	Robert McNeil	9.29
SECT MASTER	Audrey Mitchell	18.79
	Linda Mattis	15.35
	Jean Franke	15.18
REG MASTER	Ann Mollard	28.34
	Donal Duncan	24.00
	James Keehan	18.57
NABC MASTER	Chester Binasiak	29.34
	Doreen Hornback	24.54
	Carolyn Kwiatek	21.42
LIFE MASTER	Vandana Vidwans	28.94
	Paul Cornelius	23.47
	Albert Pagin	23.46
BRONZE LM	Virginia Herrick	41.15
	Lori Spaeth	39.28
	Barbara Sonsini	34.88
SILVER LM	Hansa Narasimhan	68.48
	Arlene Levy	36.37
	Ernst Jacobi	27.57
GOLD LM	Jean Flocks	57.85
	Robin Chambers	53.40
	Patricia Chambers	53.02
DIAMOND LM	Sherie Greenberg	19.51
	Donald Rothschild	13.20

Mini-McKenney

Boyer Chu	29.71
John Mattis	25.95
Marcie Pais	6.64
Freya Charney	19.64
Gary Kao	18.63
Donna Armstrong	12.62
Robert McNeil	64.09
Ivan Stoimirov	38.20
Nevena Stoimirov	38.20
Qixiang Sun	76.57
Sam Morley	52.24
Linda Mattis	38.97
Adam Meyerson	151.34
Theodore Hwa	60.09
Ann Mollard	56.79
Greg Humphreys	95.71
Carolyn Kwiatek	67.13
Doreen Hornback	56.09
Vandana Vidwans	121.91
Chandler Flickinger	94.50
Paul Cornelius	92.60
Lori Spaeth	113.71
Qing Yang	94.58
Barbara Sonsini	71.57
Carolyn Bjorklund	144.37
Hansa Narasimhan	112.34
Adrienne Oliff	98.90
Gary Macgregor	216.71
James O'Neil	190.93
Peter Friedland	107.44
Donald Rothschild	169.43
Sherie Greenberg	48.80
Richard Spitalnick	25.11



July 2002 Winners' Circle



Compiled by Alan Templeton

Monday

Bridge Mix

- 1 J. Burlingame/L. Spaeth
T. Ross/J. Brown
(A,B&C) R. Hanna/L.
Mckenna
- 8 S. Maisel/W. Harwood
(A&B) M. Fikes/D.
Shannahan
- A. Levy/F. Parsons
(A&B) N. Wolf/A.
Lalchandani
- 15 J. Fisher/B. Beardsley
S. Greenberg/L. Frye
C. Dietz/L. Foss
M. Slater/K. Kelly
C. Sideris/B. Liddicoat
- 22 P. Chambers/L. Spaeth
(A&B) M. Slater/N. Irwin
D. Chang/B. Chu
- 29 E. Kridl/J. Von Gehr
(A,B&C) D. Chang/J. Wu
(A,B&C) L. Kelly/M. Marx
(A,B&C) F. Bao/M. Wu

Tuesday Night BC*

- 2 J. Kelsey/R. Dannels
J. McCloy/L. Cicolani
(A&B) K. Siedenburg/C.
Larsen
- 9 J. Owens/G. Smith
(B&C) F. Gonzalez/B. Briant
F. Parsons/D. Rothschild
(B&C) O. Baron/K. Talbot
- 16 H. Solleder/J. Stanczak
(Tie) A. Cummings/L. Frost
(Tie) J. Rollin/J. Hancock
(A,B&C) C. & H. Lindauer
(B&C) W. Adams/R. Kilgren
- 23 (A&B) F. Herzer/R. Haines
F. Parsons/D. Rothschild
(A&B) R. Husain/K. O'Leary
- 30 H. Solleder/J. Stanczak
(A&B) K. Siedenburg/C.
Larsen
(C) S. Wicka/P. Cardoza
F. Parsons/D. Rothschild
(B&C) C. & H. Lindauer

*Hand records provided

Thursday

Sherie's BC

- 4 Closed
 - 11 D. Shannahan/M. Fikes
C. Binasiak/D. Duncan
J. Sogg/C. Kwiatek
T. Hall/J. Franke
 - 18 A. Templeton/C. Cole
N. Weiss/M. Kelly
A. & R. Chausse
B. Liddicoat/A. Mollard
 - 25 D. Shannahan/M. Fikes
C. Binasiak/D. Duncan
J. Sogg/D. Oelberg
R. Lynch/K., Kelly
- ### Thursday Aft. BC
- 4 Closed
 - 11 Unavailable
 - 18 M. Berg/F. Frates III
(A&B) N. Irwin/N. Gordon
A. Oliff/M. Van Tamelen
(B) M. Goodman/C. Lane
M. Yates/W. Brigham
(B) P. Gross/G. Leitstein
T. Ross/J. Brown
(B) N. Pappas/M. Randolph

Red Club

- 4 Closed
- 11 C. Lee/K. Hagan
- 18 P. McFerren/C. Coleman
(Tie-A&B) C. Lee/K. Hagan
(Tie-A,B&C) A. & B. Singh
(Tie) D. Wheeler/D.
Rothschild
(Tie-A,B&C) J. Newman/R.
Ward

Saturday

One Club

- 6 Closed
- 13 M. Larkin/M. O'Malley
C. & W. Brigham
(B) M. & S. Sterngold
- 20 B. Krop/A. Kridl
(A&B) M. Larkin/I. Creasey
(A&B) L. Spaeth/J.
Burlingame
- 27 D. Brown/T. Pearson
(B) A. Soares/C. Naar
(A&B) M. Slater/J.
Burlingame

Sunday

Sunday Aft. BC

- 7 Closed
- 14 P. & R. Chambers
(B) B. Leonard/J. Chognard
R. Friend/J. Owens
(B) C. & S. Wang
- 21 (A&B) J. Robinson/M. Larkin
(C) A. & B. Singh
T. Ross/A. Cummings
(B&C) M. Condon/E.
Makowski
- 28 M. Yates/B. Steele
(B) I. Creasey/B. Chakerian
M. Moore/T. Bowman
(B) C. & S. Wang

Tuesday

Alpine BC

- 2 M. Larkin/M. Mackinnon
M. Coy/W. Yetter
P. & R. Chambers
F. Phillips/J. Burlingame
- 9 V. Burkman/R. Husain
D. & G. Wheeler
M. Howe/K. Snow
M. Sato/M. Mackinnon
- 16 J. Weiss/W. Spicer
R. Chambers/M. Hafezi
M. Yates/F. Frates III
H. Cox/C. Davis
- 23 E. Jacobi/L. Spaeth
J. Schoenbrun/J. O'Neil
F. Miller/R. Singer
C. & W. Brigham
- 30 L. Mohr/G. Simpson
J. Schoenbrun/J. O'Neil
E. Kridl/P. Tsu
D. Duncan/C. Binasiak

Tuesday Noon BC

- 2 (A,B&C) K. Smith/J. Vadesz
(A,B&C) J. Foss/S. Caeton
- 9 J. Chien S. Tomas M.
Thompson B. Barlow
(Tie) M. Bairds C. Mahoney
P. Chestnut J. Coons
(Tie) J. Dammann J. Thornley
J. Brandon M. Marx
(Tie) J. Chui C. Neubauer R.
& A. Rice
- 16 D. Hornback/C. Weiler
(B) E. Reder/P. Miller
(C) D. Doolittle/D. Stowell
(A&B) J. Rosner/C. Pintz
(C) P. Lindsell/E. Tromovitch
- 23 (A,B&C) E. Moley/J. Carollo
(A&B) J. Brandon/R. Lynch
(C) M. Partney/A. Sebastian
- 30 (A&B) T. Letchfield/C. Naar
(C) B. & L. Berg
(A&B) A. Robertson/E.
Edwards
(C) G. Gusman/M. Sternlieb

Under 200 Bridge Club
See Tuesday Noon BC

Wednesday

Bridge N Brunch

- 3 Closed
- 10 S. Blum/H. Bennett
(B) P. Tsu/J. Brown
J. Thomas/R. Friend
(B) M. Howe/M. Petersen
- 17 M. Yates/P. Chambers
(B) E. Kridl/M. O'Malley
D. Chang/G. Yang
(B) B. Sonsini/M.
Hiranandani
(B&C) D. Hornback/A.
Mollard
- 24 (A,B&C) A. & B. Singh
G. Yang/D. Chang
(B) E. Beckwith/R. Chesler
(B&C) N. Wang/J. Wu
Unavailable
- 31 Unavailable

Wed. Aft. 49er**

- 3 T. Hall/D. Lowe
F. Charney/J. McNeil
- 10 J. Mattis/E. Gorlin
F. Charney/J. McNeil
- 17 C. & R. Johnson
J. Grove/L. Swarz
- 24 J. Mattis/E. Gorlin
S. Forrest/P. Burn
- 31 J. Mattis/E. Gorlin
N. & T. Ito

Cotton Club

- 3 Closed
- 10 S. Malek/J. Mrazek
S. Morley/A. Cummings
- 17 F. Gonzalez/B. Briant
P. Korn/R. Lachman
- 24 D. & G. Wheeler
S. Morley/C. Coleman
- 31 P. Seal/H. Deeby
R. Haines/M. Moore

**Includes lesson and hand records
with analysis

Friday

Friday Morning BC

- 5 Closed
- 12 R. Chambers/W. Brigham
(B) B. Hirsekorn/R. Heller
C. Brigham/N. Honda
(Tie-A&B) B. Sonsini/M.
Hiranandani
(Tie-A&B) M. Slater/K. Kelly
- 19 M. Berg/S. Greenberg
(B) B. Hirsekorn/R. Heller
(A&B) J. Von Gehr/M. Van
Tamelen
- 26 J. Robinson/A. Oliff
(B) E. Worcester/I. Creasey
(A,B&C) N. & V. Gupta

Friday Night Barometer

- 5 Closed
- 12 R. Passal/P. Kronfeld
(B) J. Harpootlian/R. Ipswitch
(B&C) P. Kao/S. Tu
B. Luttrell/K. Cheng
(B&C) D. & T. Fiero
- 19 Unavailable
- 26 (A,B&C) R. Ipswitch/J.
Harpootlian
S. Greenberg/J. O'Neil
(A,B&C) M. Migdol/S. Tu

DAY	BRIDGE CLUB	TYPE	TIME	DIRECTOR(S)	PLACE
MON	Bridge Mix	Open/Strat.	11:00 a.m.	Kev/Bon/Claire/Sherie	2639A Terminal Blvd., Mountain View
TUES	Tuesday Noon BC	Open/Strat.	12:00 p.m.	Walter Miller	Unity Church, YES Rm, 3391 Middlefield Rd, PA
	"Under 200" Club	<200 M.P.	12:00 p.m.	Walter Miller	Unity Church, YES Rm, 3391 Middlefield Rd, PA
	Alpine BC	Open/Strat.	12:00 p.m.	Cameron Cotton	2639A Terminal Blvd., Mountain View
	Kevin's Tuesday Night BC	Open/Strat.	7:00 p.m.	Kevin O'Leary	2639A Terminal Blvd., Mountain View
WED	Bridge 'n Brunch	Open/Strat.	11:00 a.m.	Sherie Greenberg/	2639A Terminal Street, Mountain View
	Wed Aft. 49er	<50 M.P.	1:30 p.m.	Walter Miller	Unity Church, YES Rm, 3391 Middlefield Rd, PA
	The Cotton Club	Open/Strat.	7:00 p.m.	Cameron Cotton	2639A Terminal Blvd., Mountain View
THUR	Thur. Afternoon BC	Open/Strat.	12:00 p.m.	Beardsley/O'Leary	2639A Terminal Blvd., Mountain View
	Sherie's BC	Open/Strat.	1:00 p.m.	Sherie Greenberg	4000 Middlefield Road, Room M4, Palo Alto
	Red Club	Open/Strat.	7:15 p.m.	Will Watson	2639A Terminal Blvd., Mountain View
FRI	Friday Morning BC	Open/Strat.	10:30 a.m.	Coleman/Van Zandt	2639A Terminal Blvd., Mountain View
	Friday Night Barometer	Open/Strat.	7:30 p.m.	Coleman/Watson	2639A Terminal Blvd., Mountain View
SAT	One Club	Open/Strat.	12:00 p.m.	Beardsley/O'Leary	2639A Terminal Blvd., Mountain View
SUN	Sunday Afternoon BC	Open/Strat.	1:00 p.m.	Claire Coleman	2639A Terminal Blvd., Mountain View

Directors:

Bonnie Beardsley (408) 263-5953
 Claire Coleman (650) 368-5917
 Cameron Cotton (415) 902-7800
 Sherie Greenberg (650) 856-7941
 Walter Miller (510) 839-5929
 Kevin O'Leary (650) 965-1827
 Yvonne Van Zandt (408) 270-8478
 Will Watson (650) 579-7552

Unit Contact:

Call Claire Coleman (650) 368-5917 or
 e-mail unit503@accesscom.com

Unit 503 Web Address:

<http://www.accesscom.com/~unit503>.

Bridge Club Phone: (650) 940-1824

District 21 Hotline: (888) 292-4612

Upcoming Events:

All Western Regional, Tuesday, Aug. 27 through Sept. 2 at Santa Clara Westin Hotel
 Charity game, Tuesday, September 17 at noon, Alpine BC
 Charity game, Wednesday, September 18 at 7 p.m., Cotton Club
Sectional, Friday, September 13 at Sacramento, Orangevale Center
 Club championship, Friday, Sept. 20 at 10:30 a.m, Friday Morn. BC
 Club champ., Friday, Sept. 20 at 7:30 p.m, Friday Night Barometer
 Unit Swiss Teams, Sunday, Sept. 22 at 1 p.m. at Bridge Center
Sectional, Friday, September 27 at San Jose, Masonic Temple

CLUB CLOSINGS:

No game on Thursday aft., August 22 at 1 p.m. Sherie's BC
 No game on Tuesday evening, August 27, Tuesday Night BC
 No game at 11 a.m. Wednesday, August 28, Bridge 'n Brunch
 No game on evening of Wednesday, August 28, Cotton Club
 No games on Thurs., Friday, Sat., Sun., Mon., August 29-Sep. 2.

Palo Alto Unit #503
 c/o Jim Turner
 418 Gilbert Avenue
 Menlo Park, CA 94025

TIME VALUE—DATED MATERIAL

Palo Alto Unit 503 Board:

Pat McFerren, President
 Merle Orellove, Vice President
 Claire Coleman, Secretary
 Albert Pagin, Treasurer
 Cres Cole
 Ginger Herrick
 Richard Johnson
 Gloria Leitstein
 Kevin O'Leary
 Barbara Sonsini
 Ethel Worcester

Editorial Staff:

Elinor Tanck (408) 738-2511
 e-mail: etanck@yahoo.com
 Lori Spaeth (650) 947-9370
 e-mail: spaeth@sbcglobal.net

Production: Jim Turner