



# *Kibitzer*

Palo Alto Unit 503

Volume XXXX, Issue 10

October 2002

## Chair Continues Hunt for the Unit Board

The 2001 election for the Unit Board of Directors is set for Sunday, December 22. At that time, the Unit members will cast their votes for six positions.

The election chair, Ginger Herrick, is searching for nominees. None of the incumbents have announced they intend to run for reelection. Sign up now to be a candidate so you will have the opportunity to learn the details of the Unit business and have your voice and opinions heard on what you think.

The Unit encourages all members to consider serving the Unit as a Board volunteer. Any Unit member who wishes to become a nominee should contact Ginger at 650/948-2995 as soon as possible so that the Unit photographer can submit photos to the Kibitzer editors by November 1.

Board members attend monthly meetings and chair and help on one or more committees. In addition to the meeting, the time required is typically a few hours a month.

## NAOP Unit Final Set for Saturday, October 19

The Palo Alto Unit will hold a NAOP Unit final on Saturday, October 19, at the Bridge Center. This is a two-session stratified flight A, B, C event for players who qualified in club NAOP games. Game time for the first session is set for noon. The director will announce the time for the evening session.

The qualifiers, posted on the bulletin board at the Bridge Center, scored average or better or finished in the upper half of the their respective flights. The players who achieve the same success in this event shall qualify for the District 21 finals to be held at the Oakland Sectional on November 23-24. Overall winners in all flights will receive a mixture of red-gold points.

### Two Nighttime "Limited" Games To Start in October

Faye Parsons reports that the introduction to new bridge players on **Monday** night went very well. "We will continue the free lessons every week at 6:55 to 7:20 p.m. and all players with fewer than 50 master points are encouraged to attend." Newcomers can join any time. Partners guaranteed.

Starting on **Thursday**, October 3, Will Watson, director of the Red Club, will add a separate section to his game for players with fewer than 200 master points. There will be free plays to those eligible for the games on October 3 and 10. The fee will be discounted to \$3 for the remainder of the year. Hand records with a brief analysis will be available. The open game will continue as a separate section at \$6. Both games start at 7:15 p.m.

### Board Meeting Highlights

- Chris Pizarra and Roger Smith, candidates for District 21 director, presented their qualifications to the Board.
- The treasurer presented a summary of projected monthly rental income from each club for use in financial planning.

## Looking for Nominees for Sportsmanship Trophy

The Unit is searching for a member to honor for outstanding sportsmanship with the Trophy to be awarded at the Unit Open Pairs and pot luck scheduled for Sunday, November 17. The trophy, donated by the late George Hiura, goes to the player who is friendly, who has a pleasant attitude and who practices active ethics. The Unit first made this award in 1962.

Elinor Tanck, committee members and last year's winner, Pat McFerren, will serve on the committee members will make the choice. Players

should contact them with a call to Pat at 650/856-0933 or to Elinor at 408/738-2511 or email etanck@yahoo.com to suggest the names of those whom they believe are worthy of the award. There will also be boxes available at the Bridge Center, Unity Church and Cubberley for players to drop in names. The deadline for nominees is November 3.

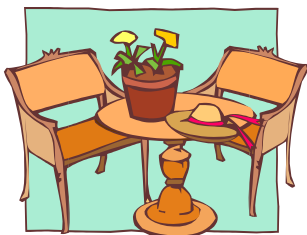
Sign-up information for the pot luck will be in the November Kibitzer Put this event on your calendar now so you will be there to enjoy the camaraderie with your bridge friends.

## Palo Alto and Santa Clara Units Vie on October 27

The Bridge Center will be the site for challenge team matches between the Palo Alto and Santa Clara Valley Units on Sunday, October 27, at 1 p.m. There will be five 28-board matches between teams in the following strata: 0-50, 0-300, 0-750, 0-1500, 0->1500.

The Unit Swiss Teams to be held Sunday, September 22 will qualify teams for this inter-Unit event. If there are no qualifying teams for any strata, the Tournament Chair, Kevin O'Leary, will select a team.

### Table Talk



Good luck to Lee Chaffee who recently moved to Richland, Oregon. She wants to keep up with the news of her Unit friends.

A pair thinks it's lucky if the opponents bid 6NT off two aces, especially when partner finds the required necessary lead for partner to cash them. When it happens a second time in the same night, this time with the holder of the aces on lead, it is one for the books.

Easy Bridge got underway on Monday, September 9 with Faye Parsons introducing bridge the easy way to 28 eager players.

From the Santa Clara Regional: A District 21 director reported that players in the South Bay were noticeably slower than in any other area in which he has directed. This is a wake up call to our directors to enforce NO SLOW PLAY.

**NEXT BOARD MEETING**  
Tuesday, October 1, 4 p.m.  
Bridge Center

*Sympathy: The Unit members and Board extend their sincere condolences to the family and friends of Mayme McKay who recently passed away. Mayme served on the Board and as Treasurer for several years.*



# July 2002 Winners' Circle



Compiled by Alan Templeton

## Monday

### Bridge Mix

- 5 (A&D) R. Hanna/J. Thornley  
M. Fikes/D. Shannahan  
(D) I. & S. Krulevitch  
(A&B) T. Hwa/Q. Sun  
(A&B) L. Spaeth/V. Vidwans  
(C) M. Wilson/B. Purchase
- 12 (A&B) W. Sumner/M.  
Hiranandani  
H. Bennett/F. Dickman  
(B&C) M. Orellove/G.  
Leitstein  
(A&B) H. Sung/S. Hasid  
(A,B&C) L. Kelly/M.  
Johnson
- 19 (A&B) E. Edwards/J. Girand  
(A&B) L. Welch/A. Laird  
(A,B&C) S. Atkinson/H.  
Fletcher  
P. & R. Chambers  
(B) E. Kridl/M. O'Malley  
(A&B) R. Singer/H. Blume,  
Jr.
- 26 M. Fikes/D. Shannahan  
(B) L. Kelly/M. Marx  
(A&B) S. & T. Schafer  
(Tie) P. & R. Chambers  
(Tie) M. Berg/L. Spaeth  
J. Fisher/B. Beardsley  
B. Sonsini/J. Thomas

## Tuesday

### Alpine BC

- 6 J. Hayashi/M. Berg  
R. Stolee/J. Flocks  
N. Rodgers/A. Arnold  
T. Ross/A. Lalchandani
- 13 M. Berg/J. Hayashi  
J. O'Neil/J. Schoenbrun  
D. Shannahan/S. Fikes  
W. Traver/W. Yetter
- 20 B. Liddicoat/M. Larkin  
M. Chen/R. Pollak  
L. Frye/S. Greenberg  
P. Chestnut/M. Brabb
- 27 A. Oliff/M. Larkin  
A. Pagin/M. Moutoux  
K. Harper/B. Krop  
G. Skidmore/W. Pomeroy

### Tuesday Noon BC

- 6 (A,B&C) J. Mattis/J. Chui  
(A&B) K. Reis/D. Gardner  
(C) D. Doolittle/D. Stowell
- 13 (A&B) E. Reder/P. Miller  
(C) E. Moley/J. Carollo  
J. Flocks/L. Corbetta  
(B) R. Lynch/J. Brandon  
(C) M. Partney/A. Sebastian
- 20 (A&B) R. Nelson/G. Gusman  
(C) B. Kates/E. Gorlin  
(A&B) A. Robertson/S. Waki  
(C) J. Vadasz/K. Smith

### Under 200 Bridge Club

Combined with Tuesday Noon BC except:  
27 (A&B) D. Doolittle/D. Stowell  
R. Jastremski/A. Story  
(B) P. Lindsell/E. Tromovitch

## Tuesday Night BC\*

- 6 (A,B&C) L. Mohr/W.  
Bidermann  
R. Enenstein/S. Greenberg  
(B) B. Robinson/D. Fecher  
(C) E. Makowski/M.  
Livenspargar
- 13 (A&B) B. Briant/F. Gonzalez  
J. McCloy/L. Cicolani  
(B) K. Siedenborg/C. Larsen  
(Tie) H. Solleder/J. Stanczak  
(Tie) E. Barlow/C. Bjorklund  
(C) F. Herzer/R. Haines  
F. Parsons/D. Rothschild  
(C) F. Del Rosario/T. Shaked
- 27 Closed

\*Hand records provided

## Wednesday

### Bridge N Brunch

- 7 (A&B) V. Herrick/E. Kridl  
M. Van Tamelen/A. Oliff  
G. Simpson/B. Sonsini  
(C) E. Nakayasu/E. Lissner
- 14 H. Solleder/J. Von Gehr  
(B) V. Herrick/W. Coke  
M. Brabb/M. Van Tamelen  
(B) M. & S. Sterngold  
(B&C) C. Donovan/D.  
Henkels
- 21 M. Hafezi/R. Chambers  
(B) V. Herrick/P. Tsu  
J. Flocks/T. Moalem  
(B) M. & S. Sterngold  
(C) D. Hornback/A. Mollard
- 28 Closed

### Wed. Aft. 49er\*\*

- 7 A. & J. Wolman  
R. Ward/J. Newman
- 14 B. & L. Berg  
J. & P. Yarkin
- 21 C. & J. Neubauer  
M. Partney/A. Sebastian
- 28 R. Palmer/N. Anderson  
M. Fox/B. Birnbaum

### Cotton Club

- 7 L. Gaines/A. Binstock  
J. Robinson/M. Moore
- 14 L. Gaines/P. Cornelius  
R. Haines/M. Moore
- 21 A. Levy/C. Bjorklund  
J. Williams/V. Vidwans
- 28 Closed

\*\*Includes lesson and hand records with analysis

## Thursday

### Sherie's BC

- 1 R. Nelson/G. Gusman  
R. Randolph/S. Anderson  
C. Maggipinto/S. Waki  
D. Hornback/A. Mollard
- 8 M. O'Leary/N. Stevens  
B. Donoghue/W. Sumner  
G. Knoll/G. Pani  
E. & M. Bueller
- 15 Closed
- 22 Closed
- 29 closed

## Thursday Aft. BC

- 1 A. Oliff/M. Van Tamelen  
(B) M. Ellers/J. Chognard  
J. Flocks/C. Brunsting  
(A,B&C) M. Goodman/C.  
Lane
- 8 B. Krop/K. Harper  
(B) R. Stolee/E. Jacobi  
C. & T. Ross  
(B) S. Light/A. Gallas
- 15 B. Hirsekorn/P. Saunders  
(B) N. Evans/A. Arnold  
B. Sonsini/T. Bowman  
(A&B) N. Pappas/S.  
O'Donnell
- 22 H. Narasimhan/M.  
Hiranandani  
(A&B) T. Schick/A. Garber  
W. Miller II/T. Stevens  
H. Corbin/K. Harper
- 29 Closed

### Red Club

- 1 (A) C. Bjorklund/J. Turner  
(B) P. Cardoza/J. Girand  
(A&B) D. Hong/H. Navid
- 8 G. Porter/P. McFerren
- 22 P. McFerren/L. Spaeth  
(B-Tie) L. Gaines/P.  
Cornelius  
(B-Tie) P. Cardoza/J. Girand
- 29 Closed

## Friday

### Friday Morning BC

- 2 L. Lane/M. Mackinnon  
(B) N. & V. Gupta  
(A&B) R. Pollak/J. Avery
- 9 E. Jacobi/H. Bennett  
(B) B. Hirsekorn/R. Heller  
(C) V. Blume/R. Lachman  
R. Friend/D. Wheeler  
(B) B. Olmo/N. Irwin  
(C) I. & W. Price
- 16 T. Moalem/S. Greenberg  
(A&B) E. Kridl/J. Robinson  
(A&B) R. Wong/H. Blume, Jr.  
(C) C. & H. Lindauer  
(Tie) L. Corbetta/S. Thomas  
(Tie) H. Narasimhan/D.  
Wheeler
- 23 (B) T. Schick/A. Arnold  
T. Ross/M. Hafezi  
(B) A. Cummings/S. Morley
- 30 Closed

### Friday Night Barometer

- 2 (A&B) H. Deeby/B.  
Figueiredo  
(B&C) P. Cornelius/K.  
Siedenborg  
(A&B) D. & R. Ng  
(A,B&C) V. Rivkin/K. Yeung  
(A,B&C) C. Flickinger/N.  
Robinson  
(A&B) L. Frost/C. Hanel  
(A,B&C) K. Siedenborg/P.  
Cornelius
- 16 (A&B) R. Yuenger/R. Siegrist  
(B&C) D. Kuo/K. Nedeltev  
M. & M. Yancey  
(B) L. Cicolani/J. McCloy  
(B&C) P. Cornelius/K.  
Siedenborg
- 23 S. Greenberg/J. O'Neil  
(A&B) J. Kelsey/R. Dannels  
(A,B&C) L. Frost/C. Hanel  
(A,B&C) G. Spinazze/S. Shih
- 30 Closed

## Saturday

### One Club

- 3 H. Bennett/G. Kucera  
(B) P. Tsu/W. Coke  
M. Slater/J. Burlingame  
(A&B) K. O'Leary/R. Husain
- 10 L. Mattis/W. Miller II  
(B) L. Corbetta/P. Cardoza  
(C) E. Yanklowitz/P. Korn  
B. Schneider/P. Galligan  
(A&B) R. Jayakumar/S.  
Narasimhan
- 17 R. Singer/W. Sumner  
(B) K. Lorimer/C. Macey  
(A&B) B. Kemper/M.  
Viswanathan
- 24 B. Krop/A. Kridl  
J. Shoenbrun/J. O'Neil  
(A&B) G. Gecht/M. Fleisher
- 31 Closed

## Sunday

### Sunday Aft. BC

- 4 P. & R. Chambers  
(A&B) M. Larkin/L. Spaeth  
R. Friend/R. Wong  
(B) M. Chen/K. Chao
- 11 F. Jackson/P. Cardoza  
(A&B) H. Narasimhan/G.  
Rosenthal  
(A,B&C) B. Leonard/J.  
Chognard  
T. Yang/K. Cheng  
(B&C) A. Templeton/B.  
Sonsini
- 18 B. Beardsley/B. Krop  
(Tie) J. Flocks/V. Vidwans  
(Tie) R. Friend/R. Wong  
H. Cutting/K. Harper  
(A,B&C) D. & E. Ehrman  
R. Friend/J. Owens  
(A,B&C) D. & T. Fiero

DAY	BRIDGE CLUB	TYPE	TIME	DIRECTOR(S)	PLACE
MON	Bridge Mix	Open/Strat.	11:00 a.m.	Kev/Bon/Claire/Sherie	2639A Terminal Blvd., Mountain View
	EZ Bridge	<50 M.P.	7:15 p.m.	Faye Parsons	2639A Terminal Blvd., Mountain View
TUES	Tuesday Noon BC	Open/Strat.	12:00 p.m.	Walter Miller	Unity Church, YES Rm, 3391 Middlefield Rd, PA
	"Under 200" Club	<200 M.P.	12:00 p.m.	Walter Miller	Unity Church, YES Rm, 3391 Middlefield Rd, PA
	Alpine BC	Open/Strat.	12:00 p.m.	Cameron Cotton	2639A Terminal Blvd., Mountain View
	Kevin's Tuesday Night BC	Open/Strat.	7:00 p.m.	Kevin O'Leary	2639A Terminal Blvd., Mountain View
WED	Bridge 'n Brunch	Open/Strat.	11:00 a.m.	Sherie Greenberg/	2639A Terminal Street, Mountain View
	Wed Aft. 49er	<50 M.P.	1:30 p.m.	Walter Miller	Unity Church, YES Rm, 3391 Middlefield Rd, PA
	The Cotton Club	Open/Strat.	7:00 p.m.	Cameron Cotton	2639A Terminal Blvd., Mountain View
THUR	Thur. Afternoon BC	Open/Strat.	12:00 p.m.	Beardsley/O'Leary	2639A Terminal Blvd., Mountain View
	Sherie's BC	Open/Strat.	12:30 p.m.	Sherie Greenberg	4000 Middlefield Road, Room M4, Palo Alto
	Red Club	Open/Strat.	7:15 p.m.	Will Watson	2639A Terminal Blvd., Mountain View
	Red Club	Under 200	7:15 p.m.	Will Watson	2639A Terminal Blvd., Mountain View
FRI	Friday Morning BC	Open/Strat.	10:30 a.m.	Coleman/Van Zandt	2639A Terminal Blvd., Mountain View
	Friday Night Barometer	Open/Strat.	7:30 p.m.	Coleman/Watson	2639A Terminal Blvd., Mountain View
SAT	One Club	Open/Strat.	12:00 p.m.	Beardsley/O'Leary	2639A Terminal Blvd., Mountain View
SUN	Sunday Afternoon BC	Open/Strat.	1:00 p.m.	Claire Coleman	2639A Terminal Blvd., Mountain View

#### Directors:

Bonnie Beardsley (408) 263-5953  
 Claire Coleman (650) 368-5917  
 Cameron Cotton (415) 902-7800  
 Sherie Greenberg (650) 856-7941  
 Walter Miller (510) 839-5929  
 Kevin O'Leary (650) 965-1827  
 Faye Parsons (408) 378-4719  
 Yvonne Van Zandt (408) 270-8478  
 Will Watson (650) 579-7552

#### Unit Contact:

Call Claire Coleman (650) 368-5917 or  
 e-mail [unit503@accesscom.com](mailto:unit503@accesscom.com)

#### Unit 503 Web Address:

<http://www.accesscom.com/~unit503>.

Bridge Club Phone: (650) 940-1824

District 21 Hotline: (888) 292-4612

### Upcoming Events:

Charity game, Tuesday, October 1 at noon, Tuesday Noon BC  
 Sectional, Saturday, October 12 at Capitola, Mid County Sr.Ctr.  
 Charity game, Wednesday, October 16 at 11 a.m., Bridge 'n Brunch  
 Charity game, Wed., October 16 at 1:30 p.m., Wed Aft 49er BC  
 NAOP Unit Final Two sessions—Saturday, October 19  
 - 1 p.m. and TBD, Bridge Center  
 Sectional, October 19 at Santa Rosa, Druids Hall  
 InterUnit Team Matches, Sun., Oct. 27, 1 p.m., Bridge Center  
 Charity game, Tuesday, October 29 at noon, "Under 200" Club

#### NOVICE – INTERMEDIATE DUPLICATE the **fun** games - tell your friends

0 - 50 MP (with lesson) Wed. 1:30 pm  
 < 200 MP Tues 12:00 pm  
 Unity Church, 3391 Middlefield Rd., Palo Alto  
 for info call Walter Miller at 510-839-5929

Palo Alto Unit #503  
 c/o Jim Turner  
 418 Gilbert Avenue  
 Menlo Park, CA 94025

TIME VALUE—DATED MATERIAL

#### Palo Alto Unit 503 Board:

Pat McFerren, President  
 Merle Orelove, Vice President  
 Claire Coleman, Secretary  
 Albert Pagin, Treasurer  
 Cres Cole  
 Ginger Herrick  
 Richard Johnson  
 Gloria Leitstein  
 Kevin O'Leary  
 Barbara Sonsini  
 Ethel Worcester

#### Editorial Staff:

Elinor Tanck (408) 738-2511  
 e-mail: [etanck@yahoo.com](mailto:etanck@yahoo.com)  
 Lori Spaeth (650) 947-9370  
 e-mail: [spaeth@sbcglobal.net](mailto:spaeth@sbcglobal.net)

**Production:** Jim Turner