



# Kibitzer

Palo Alto Unit 503

Volume XXXX, Issue 7

July 2002

## Whoop It Up at the Palo Alto Firecracker Sectional July 3-7

Make sure you celebrate your holiday with bridge at the Firecracker Sectional at the Elks Lodge from Wednesday, evening July 3 through Sunday, July 7. The Unit wants to make sure that you come; everyone in bridge will be there too!!

The fun starts with the pairs games for the stratified open and intermediate/novice flights on Wednesday and Thursday. The newcomers and non-Life masters will have their own playing area, with games for 0-5, 5-20, 20-50, 50-100 and 100-200 master point strata at every session. There are early start times on Thursday to let everyone enjoy both bridge



and traditional holiday fun and real fireworks! Bracketed Knockouts start on Friday and continue on Saturday, with pair games also on the schedule both days. The tournament concludes on Sunday with the Strati-Flighted two-session Open Swiss again with an early start and end time.

Chairman Lorna Corbetta invites players to request a donation of a discount or dinner certificate from their favorite restaurant as a door prize. Let her know at 650/566-8994.

Pick up a Sectional flyer at your favorite game or check your June Kibitzer or the Unit web page <http://www.accesscom.com/~unit503> for game times and other details.

We'll be looking for you at the Firecracker, the outstanding sectional in the Bay Area.

## Pitch In at the Unit Firecracker

Lorna Corbetta, the Firecracker Sectional Chairman and her committee, Ginger Herrick, Mary Ann Larkin and Gloria Leitstein need help and are asking Unit members to contribute. They need volunteers to come set up tables and get everything ready at 2 p.m. on Wednesday afternoon. And at the end of a successful tournament after the last hand of the Sunday Swiss, please spend a few minutes to assist with the take-down.

## Don't Be a Bridge Slob

Everyone is so proud of our new bridge center and enjoys the playing atmosphere. But, we need to keep it neat and clean or the area will be a mess in no time. Please clean up when you leave and dispose of trash properly. Also, the directors are not your maids! Please mop up spills promptly and pick up cups and papers off the floor. And we're sure that no one would dare to put gum under the table tops or the chairs!!

## Two New Games Begin Play

With the opening of the new Bridge Center, the popular Friday Night Barometer game has returned, under the direction of Claire Coleman, at 7:30 p.m. The Sunday Afternoon BC, also directed by Claire, has resumed at 1 p.m. Show your support by coming to play.

## Bridge For Beginners

Have you always wanted to learn how to play bridge but thought it was too difficult?

We use a basic clear ACBL text and guarantee you will be playing by the end of the lessons. This class is for those who know nothing about bridge or want to return for the basics. Taught in a friendly, non-stressful environment.

**Instructor:** Arnold Rudominer, a member of Unit 503, has taught this class for several years at the JCC in Palo Alto.) Cost: \$45 for NM and \$40 for members. ( 7 weeks) Wed eve 7-8 pm July 17 to Aug. 28.

**Register:** Arnold2r@aol.com; 408 293 8460 or at Little House.

**Location:** Peninsula Volunteers Little House 800 Middle Ave Menlo Park

**Tell Your Friends!**

## Sympathy

The Unit officers and members extend their sincere condolences to the family and friends of Jack Dittman who recently passed away

## **Unit Celebrates New Center with Gala Fete— Marge Yates—Ella Lehner Top Pro-Am**

The Oohs and Aahs were everywhere as the players rejoiced at the pot-luck party and Pro-Am game on Sunday, June 9 which marked the official opening of the new Bridge Center. They enjoyed delicious food, tasted the celebration cake and toasted the new home with champagne. Of course, none of this would have been possible without the special efforts of Dwane and Claire Coleman, Pat McFerren, Kevin O'Leary and Alan Templeton and so many unnamed others who worked to make the center a reality.

There were 23 tables participating in the Pro-Am game for which each non-Life masters drew a Life Master partner. The top pair was Marge Yates and Ella Lehner, with Sherie Greenberg and Shirley McGilvery a close second. Those who finished in the overalls were:

1. Marge Yates-Ella Lehner
2. Sherie Greenberg-Shirley McGilvery
3. Ina Frymire-Mary O'Malley
4. Rose Heller-Bob Sanders
5. Clarie Coleman-Rodna Martin
6. Frederick Carlson-Frances Bennett

To see pictures from party, look at the Center, or at Unit Web address: [www.accesscom.com/~unit503/opening.html](http://www.accesscom.com/~unit503/opening.html)

## **Table Talk**

Congratulations to Margaret "Maggie" Wilson and Barbara Purchase who came in first overall in District 21 in the ACBL-wide Senior Pairs on February 25. Fifth overall went to Chuck Lane and Margot Goodman. Both pairs played at the Monday Bridge Mix.

Applause also goes to Nancy Rodgers who was inducted on June 22 into "The International Forest of Friendship" in Atchison, Kansas. It honors those

who contribute to the advancement of aviation. She'll join Amelia Earhart, the Wright Brothers, Charles and Anne Lindbergh, Wiley Post, Jimmy Doolittle, Howard Hughes, Sally Ride, Chuck Yeager, Beryl Markham, Dwight Eisenhower, Senator Barry Goldwater, Colin Powell and many others. Nancy has been an active member of the Santa Clara Valley Chapter of the Ninety Nines for over twenty-five years and over the years has

flown 42 air races, with the cross country Powder Puff Derby the best known one. (Nancy compares her honor to making Life Master in bridge).

Will Watson was heard to say that in the same week, he directed the largest-31 tables on Tuesday and smallest games 2 tables Thursday night-in Palo Alto.

Get well and come back to us soon to Ernst Jacobi, who is convalescing after a stroke.



## Would You Be a Mentor? Be Mentored?

Now that we have our new Bridge Center, we would like to reactivate the mentoring program.

If you would like to be on a list of mentors (Life Masters) and mentees (non-Life Masters), we would like to know who you are.

Qualifications for a Mentor: Exemplary conduct at the bridge table and a desire to help newer players get better. Qualifications for a Mentee: Exemplary conduct at the bridge table and a willingness to learn.

How it works: Once we have enough people, we will distribute a list to all people in the program. The knowledge that mentors are not only willing, but want to play with future Life Masters, should make it easier for mentees to phone them for a date.

Please sign up with your preferred time/day at the Bridge Center near the director's desk or e-mail Lori Spaeth at [spaeth@sbcglobal.net](mailto:spaeth@sbcglobal.net)

## Qualification Set for InterUnit Matches

Plans are ready for Palo Alto vs. Santa Clara Valley Unit team matches. The inter-Unit matches will be on Sunday, August 18 at the Terminal Boulevard Bridge Center., Palo Alto paid-up Unit members may qualify for four Unit teams on Sunday, July 28 at 12:30 p.m. at the Bridge Center. This event will use a seven-board knockout format. The respective master point strata for the teams are Open, A 0-2000, B 0-500, C 0-300 and Seniors (no strata) .

Make plans now to form teams. Teams, which may include up to six players, should sign up on the list to be posted at the Bridge Center. Information should include names and master point holdings for each team member. For further info, contact Kevin O'Leary at 650/965-1827 or email [oleary20@pacbell.net](mailto:oleary20@pacbell.net).

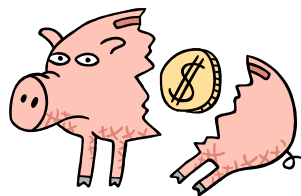
So payment to the Unit is of utmost importance.

Any generous people out there who would consider a gift now, please come forward to help us out in this time of need.

To make a donation contact Kevin O'Leary at 650/965-1827 or email [oleary20@pacbell.net](mailto:oleary20@pacbell.net)

## Bridge Center Financial Update

As we begin to enjoy our new Bridge Center, there are problems not yet solved. The permits are ok'd, the handicapped needs have been met, at great expense, and the remodeling is nearing completion. It's the financial situation that needs help. Albert Pagin, our Treasurer, reports the following:



The extra expenses could not be anticipated. The results of all the labor makes the Bridge Center a great, if not idyllic place. The donations of \$30,000 from our wonderful members has taken care of some of the expenses. Once all the bills are in, however, we will be in debt about \$20,000. The Unit has loaned the Center \$10,000 and a member has made a loan of \$5,000. It should be understood that the Unit has a fiduciary responsibility to maintain a couple of month's rent in its coffers for security purposes.

Donations received	\$29,700
<b>Expenses</b>	
Rent during construction	\$ 5000
Rent last month of lease	5000
Security deposit	5000
City permits	1300
Architect	5600
Insurance	1700
Contractors fees	* 20000
Carpet	* 5000
*estimate	
Total Expenses	\$48,600
Deficit	\$18,900



# May 2002 Winners' Circle



Compiled by Alan Templeton

## Monday

### Bridge Mix

- 6 E. Barlow/H. Bennett  
(A&B) P. Saunders/W. Yetter  
D. Shannon/D. Rothschild  
(A&B) B. Purchase/M. Wilson
- 13 (A&B) A. Lalchandani/E. Jacobi  
C. Dietz/L. Foss  
(B) M. Goodman/C. Lane  
L. Corbetta/D. Wheeler  
(B) N. Brubaker/A. Welch  
J. Flocks/E. Herrmann  
(B) J. Robinson/M. Van Tamelen
- 27 M. Yates/C. Brigham  
(B) M. Eilers/N. Brubaker  
(A&B) M. & S. Sterngold

### Palo Alto BC

- 6 P. Kueffer/L. Frye  
R. McNeil/M. Moutoux  
A. Merolla/A. Garber  
D. Hornback/A. Mollard
- 20 S. Maisel/W. Harwood  
L. Welch/J. Janetos
- 27 Closed

## Tuesdays

### Alpine BC

- 7 M. Larkin/M. Mackinnon  
N. Pappas/S. O'Donnell  
G. Drew/N. Honda  
B. Donoghue/L. Doying
- 14 P. & R. Chambers  
L. Spaeth/B. Sonsini  
E. & E. Jacobi  
M. O'Leary/R. Kilner
- 21 M. Hafezi/R. Friend  
C. Coleman/A. Levy  
G. Drew/V. Savstrom  
S. Blum/T. Bowman
- 28 M. Chin/R. Pollak  
H. Narasimhan/I. Rose  
J. Pomeroy/B. Varner  
P. Kueffer/G. Leitstein

### Tuesday Noon BC

- 7 L. Spaeth/E. Jacobi  
(B&C) L. & J. Mattis  
(A,B&C) E. Nakayasu/E. Lissner
- 14 (A,B&C) E. Moley/J. Carollo  
M. Brabb/A. Gallas  
(B) E. Nakayasu/T. Kato  
(C) F. Bennett/J. Chui
- 21 S. Waki/D. Hornback  
(B&C) D. Doolittle/D. Stowell  
T. Stevens/R. Chesler  
(B&C) H. Master/L. Westerinen
- 28 (A&B) L. Mattis/C. Naar  
(C)D. Doolittle/S. Stowell  
(A,B&C) J. Mattis/J. Chui

**Under 200 Bridge Club**  
Included in Tuesday Noon BC

## Tuesday Night BC\*

- 7 R. Raza/J. Owens  
(B) K. O'Leary/M. Wilson
- 14 H. Solleder/J. Stanczak  
(A&B) C. & H. Lindauer  
L. Cicolani/J. McCloy  
(A&B) R. Haines/M. Moore  
(A&B) B. Briant/F. Gonzalez
- 21 E. Jacobi/L. Spaeth  
(B) K. Siedenbug/C. Larsen  
(B&C) K. Hagen/C. Lee
- 28 P. Kamas/M. Cochran  
(B) C. & H. Lindauer  
(A&B) K. O'Leary/M. Wilson

\*Hand records provided

## Wednesdays

### Bridge N Brunch

- 1 Closed
- 8 K. Maxfield/V. Herrick
- 15 S. Blum/H. Bennett  
B. Sonsini/G. Simpson
- 22 S. Blum/H. Bennett  
K. Maxfield/V. Herrick
- 29 C. Coleman/M. Yates  
W. Pomeroy/M. Randolph

### Wed. Aft. 49er\*\*

- 1 E. Pope/J. Cademartori  
F. Charney/J. McMeil
- 8 F. Bennett/J. Chui  
N. & T. Ito
- 15 T. Hall/D. Lowe  
F. Charney/J. McMeil
- 22 E. Moley/J. Carollo  
F. Charney/J. McMeil
- 29 V. Mason/K. Pickert  
N. & T. Ito

### Cotton Club

- 1 J. Kelsey/R. Dannels  
J. Kuhn/A. Lin
- 8 H. Solleder/M. Moore  
L. Yokel/C. Millikan
- 15 P. & R. Kilner  
C. Davis/E. Tanck
- 22 L. Spaeth/E. Tanck  
V. Vidwans/J. Williams
- 29 F. Herzer/M. Mongird  
C. Davis/E. Tanck

\*\*Includes lesson and hand records with analysis

## Sundays

### Sunday Aft. BC

Temporarily closed

## Thursdays

### Sherie's BC

- 2 A. Garber/S. Greenberg  
A. Mollard/D. Hornback  
J. Sogg/C. Kwiatek  
S. & I. Krulevitch
- 9 G. Humphreys/A. Meyerson  
M. Morris/C. Weiler  
T. Edwards/N. Girand  
F. Charney/J. McNeil
- 16 M. O'Leary/C. Weiler  
J. & W. Pomeroy  
J. Sogg/C. Kwiatek  
T. Hale/J. Franke
- 23 V. Burkman/C. Weiler  
E. Ehrman/R. Husain  
D. Foti/F. Omeri  
R. Chesler/J. Birnbaum
- 30 Closed

### Thursday Aft. BC

- 2 P. Chambers/H. Narasimhan  
(B) B. Olmo/V. Herrick  
B. Sonsini/C. Cotton  
(B) D. Lowry/A. Lyew
- 9 R. Stolee/E. Jacobi  
(B) P. Tsu/J. Chognard  
J. Magid/H. Bennett  
(B) N. Rodgers/B. Purchase
- 16 H. Solleder/J. Stanczak  
(B) I. Creasey/N. Irwin  
K. Maxfield/C. Cotton  
(A&B) N. Wang/M. Chen
- 23 (A&B) J. Brown/V. Herrick  
(A&B) J. Robinson/P. Tsu  
G. Wheeler/G. Drew
- 30 (A&B) G. Leitstein/P. Gross  
C. & W. Brigham  
(B&C) M. & T. Randolph

### Red Club

- 2 R. & J. Williams  
(B&C) L. Gaines/P. Cornelius
- 9 T. Gokcen/R. Passal  
(B) S. Chen/M. Fleisher  
(C) J. & L. Mattis
- 16 H. Solleder/J. Stanczak  
(B) N. Wang/M. Chen
- 23 (A,B&C) F. Gonzalez/B. Briant  
(A&B) L. Gaines  
(C) S. Wicka

## Fridays

### Friday Morning BC

- 3 J. O'Neil/J. Schoenbrun  
(B) J. Robinson/A. Arnold  
G. Simpson/B. Sonsini  
(B) B. Purchase/M. Wilson
- 10 H. Solleder/A. Levy  
(B&C) A. Meyerson/G. Humphreys  
G. Macgregor/F. Lowenthal  
(B) M. O'Malley/E. Worcester
- 17 (C) S. Morley/A. Cummings  
T. Ross/P. Chambers  
(B) J. Chognard/B. Olmo  
(C) J. Sogg/G. Pani  
H. Narasimhan  
(B) J. Robinson/E. Kridl  
(C) S. Morley/A. Cummings
- 24 M. Yates/B. Beardsley  
(B) L. Spaeth/C. Brunsting  
(C) S. Goldshine/K. O'Leary  
(A,B&C) A. Cummings/S. Morley
- 31 H. Narasimhan/E. Herrmann  
(B) I. Creasey/N. Irwin  
(A&B) E. & E. Jacobi

### Friday Night Barometer

Temporarily Closed

## Saturdays

### One Club

- 4 P. & R. Chambers  
(B) D. & E. Ehrman  
(A&B) K. Maxfield/M. Fleisher
- 11 P. & R. Chambers  
(B) V. Vidwans/R. Gupta  
(A&B) J. Robinson/B. Varner  
(C) T. Streib/R. Baron
- 18 A. Kridl/B. Krop  
(B) C. Anderson/K. O'Leary  
M. Slater/J. Burlingame  
(B) M. Moore/J. Robinson
- 25 T. Moalem/K. Harper  
(B) E. & E. Jacobi  
G. Drew/N. Honda  
(B) M. O'Malley/E. Worcester



## It Seems to Me

by Gersh Wheeler

The following is a suggested solution to the # 2 question, posed in the article in the June Kibitzer. Partner opens the bidding with 1NT. You hold two 5-card majors. What do you do? There are four possibilities.

1. Your hand is very weak so that partner probably cannot make 1NT. Transfer to your weaker major. The idea here is that any strength in the better major may produce a trick or two along with your length in the trump suit. If the opponents bid, don't compete.
2. Your hand is weak, but your combined strength is 22-24 HCP. Use the following: 1NT 2D (transfer) 2H 2S. Here, you give the opener the chance to play at the two level in 2S or at worst 3H.
3. You would like to be in game, if partner has a maximum. Use the following: 1NT 2H (transfer) 2S 3H. Here, you are forcing the contract to the three level. If partner has a maximum NT opener, you'll be in game.
4. You want to be in game even if partner's opener is a minimum. Use the following: 1NT 2D (transfer) 2H 3S. This is definitely a force to game.

### Newcomers

A warm welcome to new Palo Alto Unit 503 members: Sue Cahn, Evelyn Schramm, Adeline Soares and Paula Zappettini. Hello, to Mildred Harrington, Sam Morley and Ursula Summey, who have transferred into our Unit.

### Player Advancements

The ACBL May 1 printout shows that the following players have moved up. Congratulations!

#### Junior Master

5 MP

#### Club Master

20 MP

#### Sectional Master

50 MP

#### Bronze LM

500 MP

David Ackerley, John Cademartori  
Eugene Kates, Marcie Pais  
Cecile Naar

Avan Banerjee, Tom Letchfield,  
Shirley McGilvray  
Chandler Flickinger

### Next Board Meeting

Tuesday, July 2, 4:00 p.m.  
Bridge Center,  
2639A Terminal Blvd.,  
Mountain View

### NOVICE – INTERMEDIATE DUPLICATE the **fun** games - tell your friends

0 - 50 MP (with lesson)      Wed. 1:30 pm  
< 200 MP      Tues 12:00 pm  
Unity Church, 3391 Middlefield Rd., Palo Alto  
for info call Walter Miller at 510-839-5929

DAY	BRIDGE CLUB	TYPE	TIME	DIRECTOR(S)	PLACE
MON	Palo Alto BC Bridge Mix	Open/Strat. Open/Strat.	10:00 a.m. 11:00 a.m.	Sherie Greenberg Kevin/Bonnie/Claire	JCC, 655 Arastradero Road, Palo Alto 2639A Terminal Blvd., Mountain View
TUES	Tuesday Noon BC "Under 200" Club Alpine BC Kevin's Tuesday Night BC	Open/Strat. <200 M.P. Open/Strat. Open/Strat.	12:00 p.m. 12:00 p.m. 12:00 p.m. 7:00 p.m.	Walter Miller Walter Miller Cameron Cotton Kevin O'Leary	Unity Church, YES Rm, 3391 Middlefield Rd, PA Unity Church, YES Rm, 3391 Middlefield Rd, PA 2639A Terminal Blvd., Mountain View 2639A Terminal Blvd., Mountain View
WED	Bridge 'n Brunch Wed Aft. 49er The Cotton Club	Open/Strat. <50 M.P. Open/Strat.	11:00 a.m. 1:30 p.m. 7:00 p.m.	Sherie Greenberg/ Walter Miller Cameron Cotton	2639A Terminal Street, Mountain View Unity Church, YES Rm, 3391 Middlefield Rd, PA 2639A Terminal Blvd., Mountain View
THUR	Thur. Afternoon BC Sherie's BC Red Club	Open/Strat. Open/Strat. Open/Strat.	12:00 p.m. 1:00 p.m. 7:15 p.m.	Beardsley/O'Leary Sherie Greenberg Will Watson	2639A Terminal Blvd., Mountain View JCC, 655 Arastradero Road, Palo Alto 2639A Terminal Blvd., Mountain View
FRI	Friday Morning BC Friday Night Barometer	Open/Strat. Open/Strat.	10:30 a.m. 7:30 p.m.	Coleman/Van Zandt Coleman/Watson	2639A Terminal Blvd., Mountain View 2639A Terminal Blvd., Mountain View
SAT	One Club	Open/Strat.	12:00 p.m.	Beardsley/O'Leary	2639A Terminal Blvd., Mountain View
SUN	Sunday Afternoon BC	Open/Strat.	1:00 p.m.	Claire Coleman	2639A Terminal Blvd., Mountain View

#### Directors:

Bonnie Beardsley (408) 263-5953  
 Claire Coleman (650) 368-5917  
 Cameron Cotton (415) 902-7800  
 Sherie Greenberg (650) 856-7941  
 Walter Miller (510) 839-5929  
 Kevin O'Leary (650) 965-1827  
 Yvonne Van Zandt (408) 270-8478  
 Will Watson (650) 579-7552

#### Unit Contact:

Call Claire Coleman (650) 368-5917 or  
 e-mail [unit503@accesscom.com](mailto:unit503@accesscom.com)

#### Unit 503 Web Address:

<http://www.accesscom.com/~unit503>.

Bridge Club Phone: (650) 940-1824

District 21 Hotline: (888) 292-4612

## Upcoming Events:

Club championship Tuesday, June 25 at noon at Alpine BC

Club championship Thursday, June 27 at 7:15 p.m. at Red Club

### **PALO ALTO** Wednesday, July 3 - Sunday, July 7, Elks Lodge **SECTIONAL**

*All clubs closed Wednesday night, July 3 -Sunday, July 7*

Club championship Wed., July 10 at 11 a.m. at Bridge 'n Brunch

Club championship Thursday, July 11 at 1 p.m. at Sherie's BC

Club championship Monday, July 15 at 11 a.m. at Bridge Mix

Club championship Thursday, July 18 at noon at Thurs. Aft. BC

Sectional Friday, July 19 at Oakland, Merritt College

Club championship Saturday, July 20 at noon at One Club

Sectional Saturday, July 13 at San Mateo Expo Center

Palo Alto Unit #503  
 c/o Jim Turner  
 418 Gilbert Avenue  
 Menlo Park, CA 94025

TIME VALUE—DATED MATERIAL

#### **Palo Alto Unit 503 Board:**

Pat McFerren, President  
 Merle Orelove, Vice President  
 Claire Coleman, Secretary  
 Albert Pagin, Treasurer  
 Cres Cole  
 Ginger Herrick  
 Richard Johnson  
 Gloria Leitstein  
 Kevin O'Leary  
 Barbara Sonsini  
 Ethel Worcester

#### **Editorial Staff:**

Elinor Tanck (408) 738-2511  
 e-mail: [etanck@yahoo.com](mailto:etanck@yahoo.com)  
 Lori Spaeth (650) 947-9370  
 e-mail: [spaeth@sbcglobal.net](mailto:spaeth@sbcglobal.net)

**Production:** Jim Turner